

OFFICE FOR LEASE

Pacific Parkway Center

12909 SW 68th Pkwy, Suite 250, Portland, OR 97223



Key Features



2,962 sq. ft. office

Enjoy a Portland office location while benefiting from Washington County's favorable business tax structure

Building **conference room**

Upgraded common areas

Immediate access to Interstates 5 and 217

Nearby amenities and services

Available 8/01/2026

Lease Rate:

**\$36.00/sq. ft./yr.
full service**

Jake Bigby

jakeb@pactrust.com

Caitlin Knecht

caitlink@pactrust.com

503.624.6300

Owned & Managed by

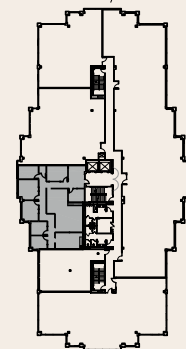
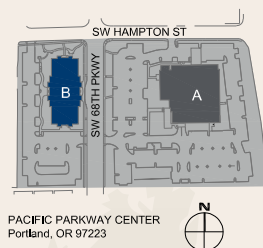
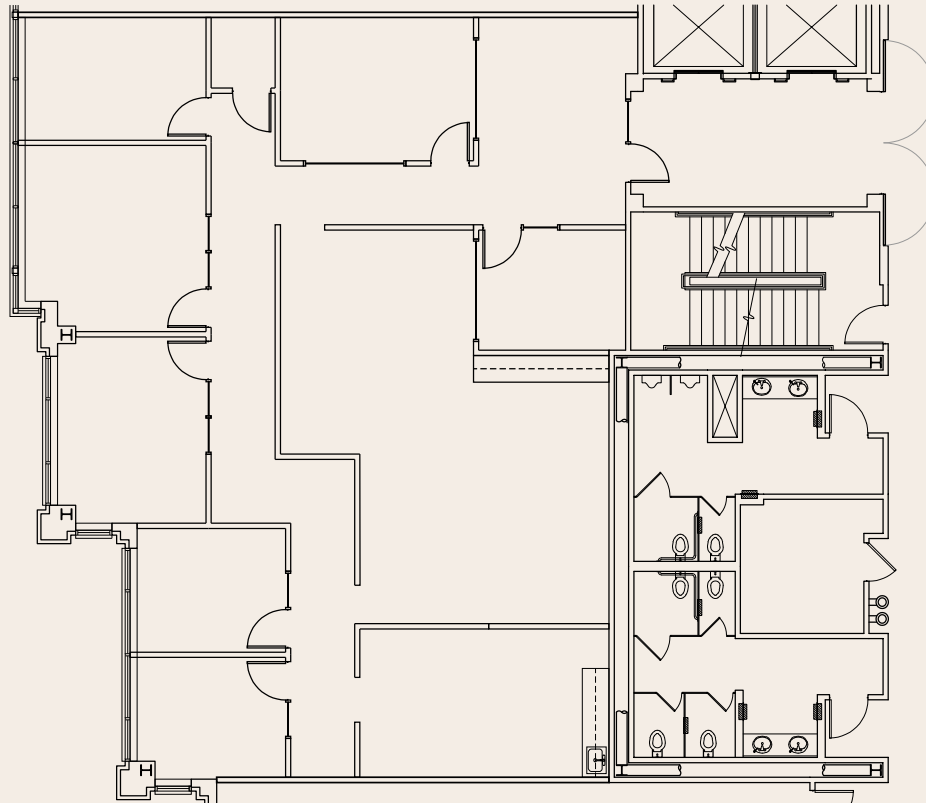
PACTRUST

© 2026 PacTrust. All information supplied herein, including but not limited to measurements, dimensions, and specifications, is deemed reliable but is not guaranteed and should be independently verified. Any reliance on the information contained herein is at the user's own risk.

Space Plan

12909 SW 68th Pkwy, Suite 250, Portland, OR 97223

2,962 Sq. Ft.



BUILDING PLAN

Jake Bigby

jakeb@pactrust.com

Caitlin Knecht

caitlink@pactrust.com

503.624.6300

www.PacTrust.com